



LOCAL SHOPS & ENTERTAINMENT

- 0.2 mi to CorePower Yoga
- 0.2 mi to Orange Theory Fitness
- 0.2 mi to Brew Shop
- 0.3 mi to Colonial Village
- 0.5 mi to Courthouse Plaza 1 & 2
- 0.7 mi to Gold's Gym
- 0.8 mi to The Crossing Clarendon
- 1.8 mi to National Mall

LOCAL PARKS

- Rocky Run Park
- Fort Myer Heights Park
- Rosslyn Highlands Park
- Iwo Jima Memorial

LOCAL RESTAURANTS

- Starbucks
- Compass Coffee
- South Block
- Barley Mac
- Bayou Bakery
- Brooklyn Bagels
- Sushi Rock
- Tupelo Honey
- Rhodeside Grill
- Il Radicchio
- Guajillos Mexican
- Ambar
- Circa

LOCAL GROCERY & PHARMACIES

- 0.5 Safeway
- 0.5 mi to Target
- 0.6 mi to CVS
- 0.8 mi to Whole Foods

PUBLIC SCHOOLS

- Innovation Elementary School
- Dorothy Hamm Middle School
- Yorktown High School

LOCAL TRANSIT

- 0.5 mi to Courthouse Metro Station
- 0.7 mi to Rosslyn Metro Station
- 1.0 mi to Clarendon Metro Station
- 5.0 mi to Ronald Reagan National Airport



CONVENIENT TO LOCAL PARKS AND GREEN SPACE

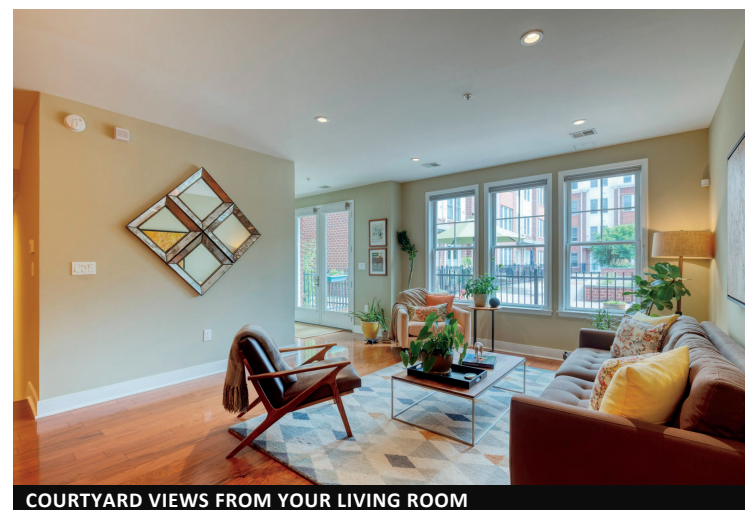


RESTAURANTS, SHOPPING, AND ENTERTAINMENT WITHIN BLOCKS



1418 RHODES ST N | UNIT B114

ARLINGTON, VA 22209



COURTYARD VIEWS FROM YOUR LIVING ROOM



PRIVATE PATIO PERFECT FOR ENTERTAINING



MARYBETH G. FRASER, CEO, MBA, REALTOR®, LICENSED IN VA & DC

Certified Luxury Home Marketing Specialist® | Accredited Staging Professional®

703.798.1803 | marybeth@magnificentmanors.com | www.magnificentmanors.com

Licensed in DC and VA, Marybeth Fraser is a real estate wealth management executive with decades of experience in marketing, sales and communications. She specializes in remodeling and transforming her clients' homes to boost their returns when selling. Her client dedication and real estate expertise are so well-respected that she's been referred to as a "home-selling hero" and "the best Realtor® I have ever worked with." Marybeth's impressive track record and exceptional negotiation skills have inspired her clients to repeatedly refer her to their friends and family. Her skills are complimented by an exceptionally talented team of agents, marketing, social media and administrative specialists.



Like us on Facebook & Follow Us on Social Media! #magnificentmanors
www.MagnificentManors.com



703.224.6000 | 2111 Wilson Blvd, Suite 1050 | Arlington, VA 22201
Each office is independently owned and operated. If you are currently under a brokerage agreement with another firm do not consider this a solicitation.



For more details and a 3D Tour:





OPEN CONCEPT DESIGN FOR TODAY'S MODERN LIFESTYLE

LUXURIOUS 2-LEVEL CONDO WITH DEN AND BACK PATIO

This magnificent 2-bedroom plus den, 2.5 bath townhouse-style condo provides a sense of spaciousness and separation, offering distinct areas for relaxation, entertainment and privacy. As you walk through the front door, you'll notice the elegant hardwood floors with timeless appeal and natural light streaming through the wall of windows. The open concept floor plan includes a modern kitchen where the stainless-steel high-end appliances, deluxe granite countertops and a breakfast bar are both functional and eye-catching. The den adds versatility to the layout, allowing it to be used as an exercise area, TV room or home office. From the generously sized living and dining areas, wander outside to your fenced-in patio that beckons you to sink into relaxation, whether it's enjoying a morning coffee or relishing an alfresco meal. It's a sanctuary that offers a perfect place for alone time or sharing heartfelt conversations with friends.

On the upper level, the primary bedroom exudes an air of tranquility. Adjoining this spacious room is a spa-inspired en-suite bath, a haven of rejuvenation. Travertine tile, in a neutral palette, grace the surfaces, evoking a timeless sense of grandeur, while the soaking tub promises a serene escape. Twin vanities and the spacious walk-in shower featuring a frameless glass door complete this deluxe bathroom. The second bedroom is spacious enough to comfortably fit a queen-sized bed with nightstands flanking it. Down the hall is the second modern bathroom and closet with a full-size washer and dryer, making laundry day extra convenient.

Two assigned parking spaces in an underground garage are accessed through a private entrance from your condo offering a unique level of convenience and exclusivity for buyers who prioritize easy access and enhanced security. Completing the high value features of this magnificent condo are 3 climate-controlled, secure storage rooms.



GENEROUSLY SIZED SECOND BEDROOM



BACK PATIO PERFECT FOR LOUNGING OR OUTDOOR DINING



ADJACENT DINING AREA FOR ENTERTAINING OR DAILY MEALS



SPACIOUS GOURMET KITCHEN WITH AN ABUNDANCE OF STORAGE



LUXURIOUS ENSUITE PRIMARY BATH



PRIMARY BEDROOM SUITE IS A RETREAT AT THE END OF THE DAY



SPACIOUS AND MODERN HALF BATH ON MAIN LEVEL



BONUS ROOM FOR A HOME OFFICE OR WELLNESS SPACE

RHODES HILL SQUARE'S PRIME LOCATION

The vibrant Courthouse neighborhood has the ever-popular weekly Arlington Farmers Market, Whole Foods, Target, Courthouse Movie Theatres, a variety of restaurants, gyms, retail outlets and coffee shops – all blocks from your front door. Georgetown, Clarendon and Rosslyn are a short distance away. The Courthouse metro, bus stops and bike share stations are within blocks making your commute to DC, the Pentagon or Tysons Corner extra convenient.